

1505 Ada Hayden Rd Ames, Iowa

See Builder For Pricing

Tasteful Homes has more than 25 years of experience building homes of distinction in Ames. Tasteful Homes is committed to building quality family homes with attention to detail, style and value.

Nathan Johansen and the Tasteful Homes Team are hands-on builders involved in all areas of their work, from design and product selection to management of all aspects of construction. They are regular visitors to the job sites to ensure that the high standards they expect are being met.

FLOOR PLAN

- One Story Ranch Home Approx 3,092 Finished Sq. Ft. Main floor: 1,921 Lower: 1,171 (approx. fin. sq ft noted)
- 5 Bedroom, 3 Baths & Powder Bath, Laundry, Mudroom with Drop Zone.
- Open Floor Plan with Varying 10' & 12' Main Floor Ceiling Heights
- Large 12' Tall Foyer with Tray Ceilings.
- Large Open Kitchen with Island and Walk-in Pantry
- Large Master Bedroom and Bath with Tub, Tile Shower and Walk-In Closet.
- Large Open Basement Family Rec Room with Wet Bar.
- Spacious 3 Car Garage
- Generous Unfinished Storage Space

EXTERIOR FEATURES

- Covered Trex composite Deck with metal railing and steps to grade
- Premium .44 Mastic Vinyl Siding Materials
- Manufactured Stone
- Large Marvin Casement Windows
- GAF Timberline Lifetime HDZ Shingles (Charcoal). Subject to Change.
- 8 Foot Tall Garage Doors
- 8 Foot Tall Therma-Tru Fiberglass Entry Doors

INTERIOR FINISHES

- Painted and Stained Cabinetry
- Granite Countertops with Silgranite Undermount Kitchen Sink
- LVP and Tile Flooring with Tile Backsplashes
- Oil Rubbed Bronze / Black Hardware, light Fixtures and Plumbing Fixtures
- Tray Ceilings, Decorative Painted Trim, Shiplap Trim, and Floating Shelves
- Stainless Steel Appliances. Slide-In Range, Vented Exhaust hood, Dishwasher, Microwave and Refrigerator Included. Upgraded Appliances.
- Easy Clean Onyx Shower pan with Tile wall surround.
- 8' Tall Interior Doors on Main Floor.

EFFICIENCY HIGHLIGHTS

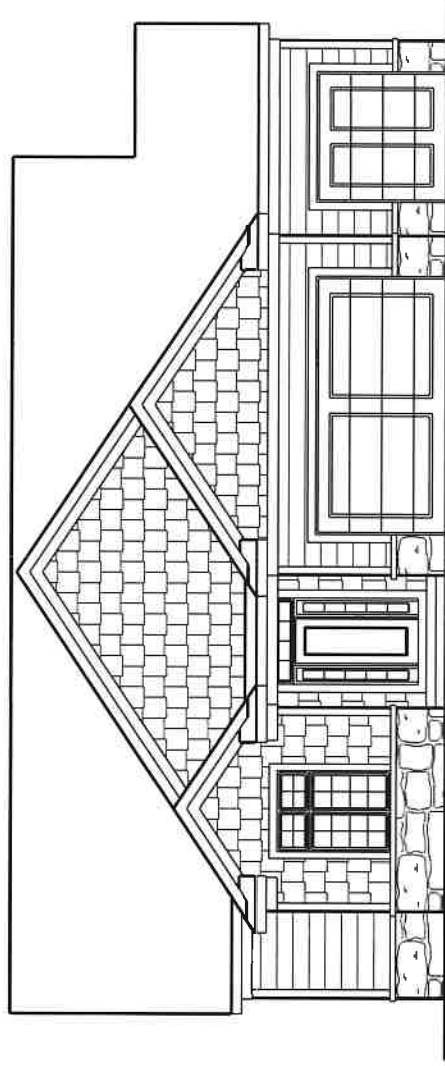
- 2 x 6 Construction with Sheeted Exterior walls, 50 Year Advantech Subfloor.
- Timber Strand Studs in Cabinet Locations to Ensure Straight Walls.
- Blown-In Fiberglass Insulation and Insulated Steel Garage Doors.
- Marvin Casement Windows.
- High Efficiency Furnace with AC with 85 Gallon Electric Water Heater.
- 60" Linear Allusion Platinum Electric Fireplace in Great Room

Note: Actual Elevation Finishes May Vary From Drawing. Features may Change.



Tasteful Homes
(515) 520-3615

[HTTP://TASTEFULHOMESAMES.COM](http://TASTEFULHOMESAMES.COM)



FRONT ELEVATION
21-12500

Tasirefu Homes

1505 Ada Hayden

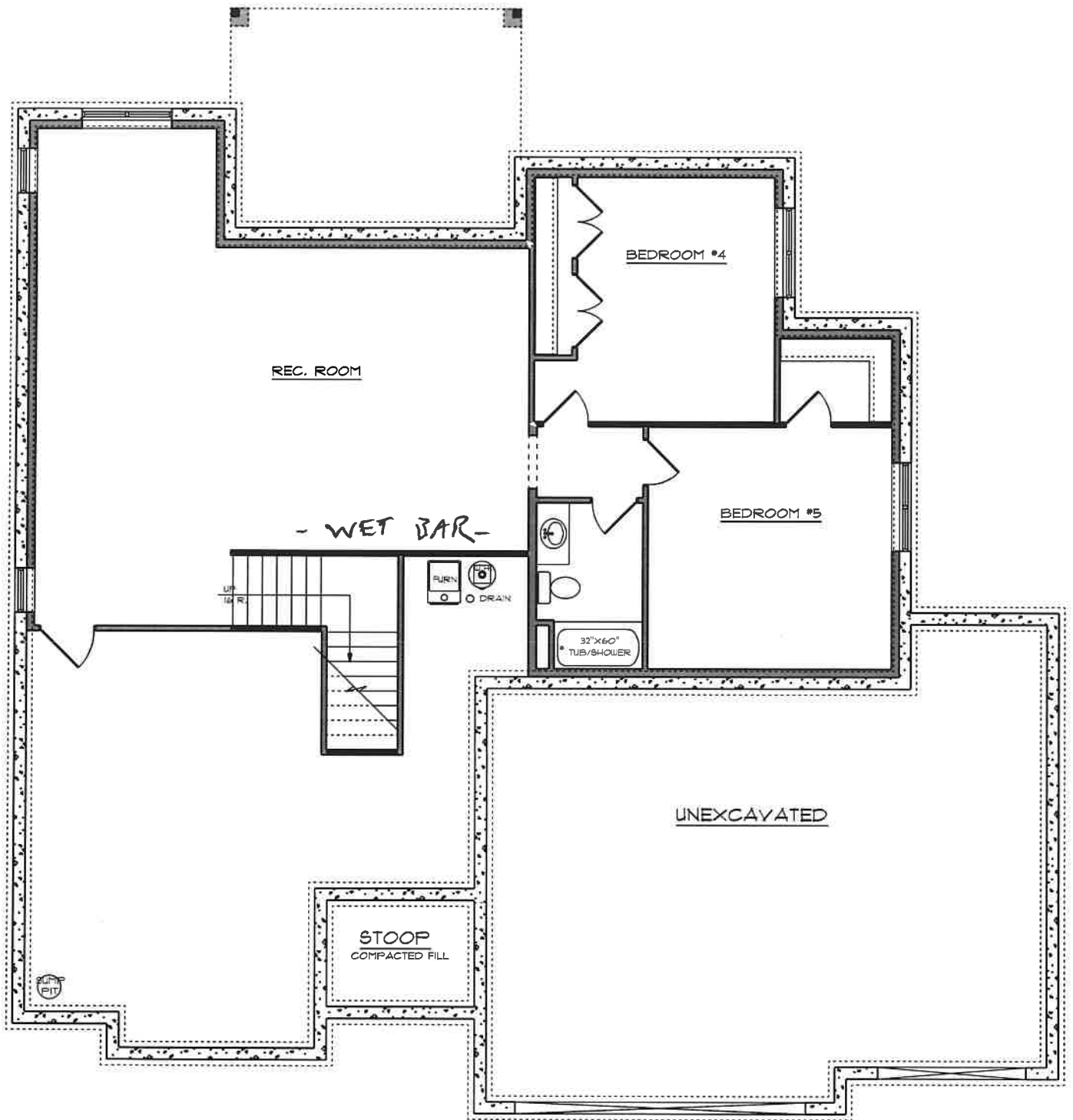
Annex



MAIN FLOOR PLAN

21-12500

TASTEFUL HOMES
1505 AOA HARPER *AMES*



FOUNDATION PLAN
21-12500

TASTEN HOMES
1505 ADA HWY DETN *AMES*



BUILDER DISCLAIMER

Homes built for sale that are on the market are subject to the following changes and variances from the marketed material:

➤ **Layout Changes**

- **Minor modifications may be made during construction per Builder discretion therefore varying from the Present Floor Plan.**

➤ **Finish Changes**

- **Interior and Exterior Finishes stated and shown on the promotional materials are subject to change.**

➤ **Pricing**

- **The listed and completed price of the product may vary from the price stated on the promotional materials.**

➤ **Additional Information**

- **See Builder for additional information and current details regarding the specific product of interest.**





The Tasteful Homes Difference

Tasteful Homes is Dedicated to Being the Best

Tasteful Homes is committed to Quality Construction and to the Details that place a Home on another level. Tasteful Homes understands a home is a big investment and should be protected and treated with much care and respect. We are hands on builders that give 100 percent to every project working towards nothing less than the best!

Tasteful Homes Cares about its Customers

Tasteful Homes believes in doing what's right and doing things the right way. We think ahead to the long term, not the short term. We understand the importance of products being constructed well and being trouble free. Tasteful Homes carefully selects quality materials that last and perform over time using proven construction techniques. Tasteful Homes also ensures only quality professional labor and contractors are on the job. The benefits of making a Tasteful Homes purchase continues well after the sale by providing service and honoring warranty matters.

Tasteful Homes is Worth the Additional Investment

We understand our product may be more of an investment but it's worth it. Expensive repairs and continual maintenance needs not only result in dissatisfaction but creates unnecessary stress and expense in addition to affecting resale value.

Be sure to pick-up a brochure today for more information.

