

1527 Ada Hayden Rd Ames, Iowa

See Builder for Pricing

Tasteful Homes has more than 25 years of experience building homes of distinction in Ames.

Tasteful Homes is committed to building quality family homes with attention to detail, style and value.

Nathan Johansen and the Tasteful Homes Team are hands-on builders involved in all areas of their work, from design and product selection to management of all aspects of construction. They are regular visitors to the job sites to ensure that the high standards they expect are being met.

FLOOR PLAN

- One Story Ranch Home Approx 3,221 Sq. Ft.
Main floor: 1,963 Lower: 1,258 (approx. fin. sq ft)
- 5 Bedroom, 3 ½ Bath Open Floor Plan with Varying Ceiling Heights
- 10' foot Great Room, Kitchen, Dining Area and Foyer Ceilings.
- Large Kitchen Island and Hidden Walk-in Pantry
- Large Master Bedroom and Bath with Walk-in closet
- Spacious 3 Car Garage
- Generous Unfinished Storage Space

EXTERIOR FEATURES

- Covered Cedar Deck
- Premium .44 Mastic Vinyl Siding Materials
- Manufactured Stone
- Large Marvin Casement Windows
- Malarkey Highlander 30 Year Shingles (Midnight Black)
- 8 Foot Tall Garage Doors
- 8 Foot Tall Therma-Tru Fiberglass Entry Doors

INTERIOR FINISHES

- Painted Cabinetry
- Granite Countertops
- Silgranite Undermount Kitchen Sink
- Hardwood and Tile Flooring with Tile Backsplashes
- Oil Rubbed Bronze / Black Hardware, light Fixtures and Plumbing Fixtures
- Tray Ceilings, Decorative Beams, Shiplap Trim, and Built-Ins
- Stainless Steel Appliances. Slide-In Range, Vented Exhaust hood, Dishwasher, Microwave and Refrigerator Included.
- Easy Clean Onyx Shower pan with Tile walls
- Painted and Stained Trim Work with 8' Tall Interior Doors on Main Floor.

EFFICIENCY HIGHLIGHTS

- 2 x 6 Construction with Sheeted Exterior walls, 50 Year Advantech Subfloor.
- Timber Strand Studs in Cabinet Locations to Ensure Straight Walls.
- Blown-In Fiberglass insulation and Insulated Steel Garage Doors.
- Marvin Casement Windows.
- High Efficiency Furnace and AC with 85 Gallon Electric Water Heater.
- Heatilator 36" Gas Fireplace in Living Area

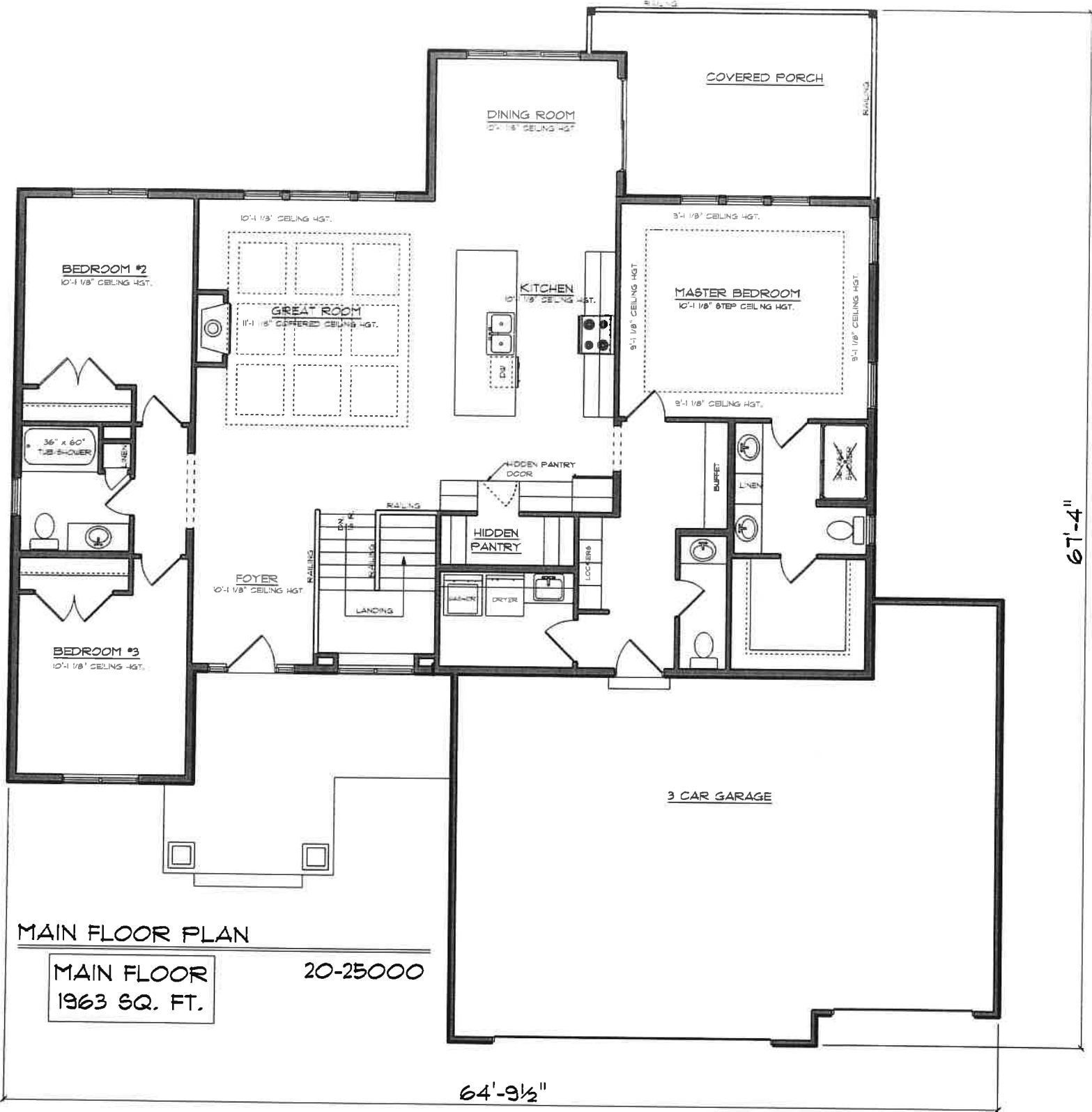
Note: Actual Elevation Finishes May Vary From Drawing. Features may Change.



Tasteful Homes

(515) 520-3615

[HTTP://TASTEFULHOMESAMES.COM](http://TASTEFULHOMESAMES.COM)



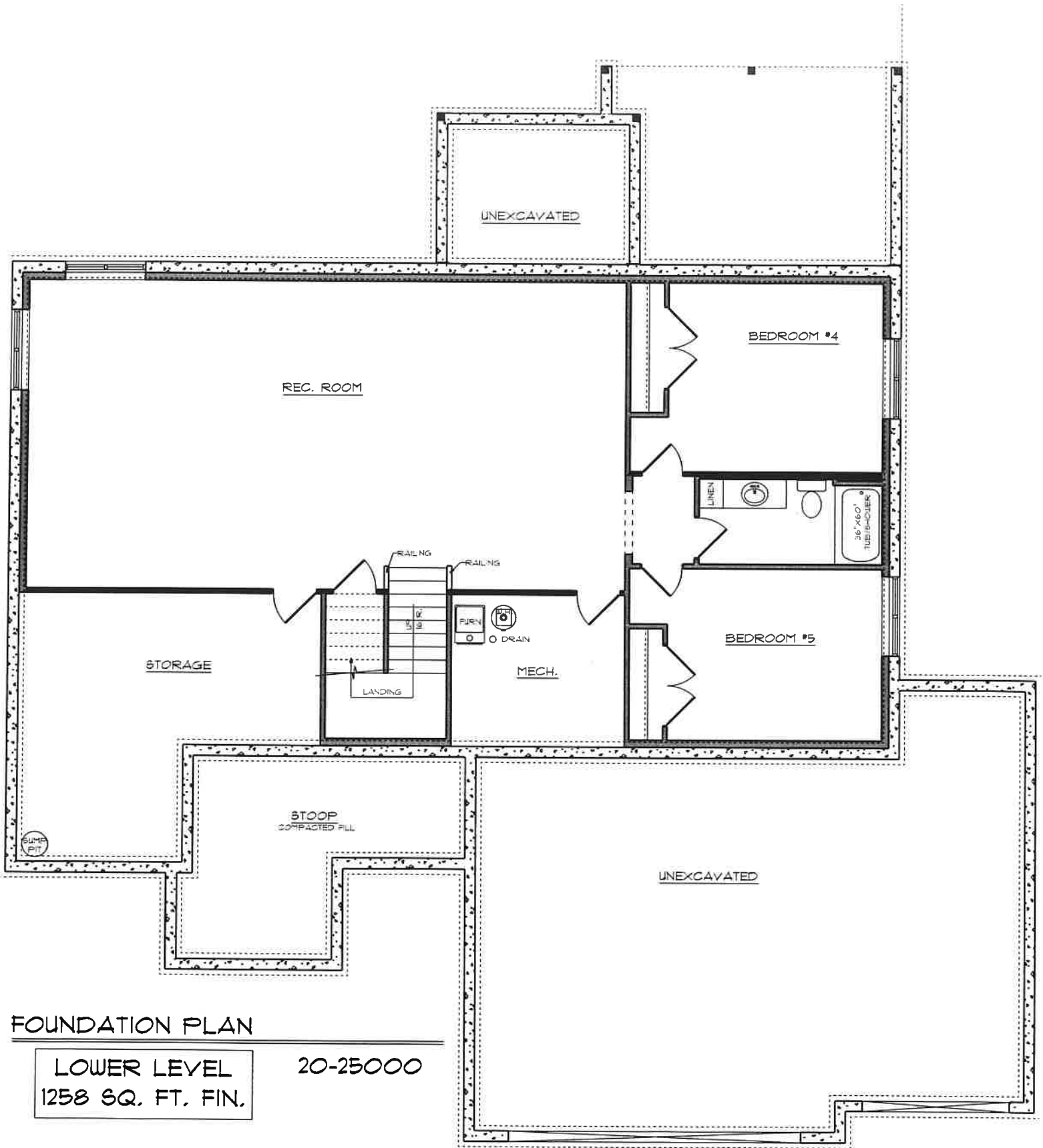
MAIN FLOOR PLAN

MAIN FLOOR
1963 SQ. FT.

20-25000

64'-9 1/2"

67'-4"



FOUNDATION PLAN

LOWER LEVEL
1258 SQ. FT. FIN.

20-25000



BUILDER DISCLAIMER

Homes built for sale that are on the market are subject to the following changes and variances from the marketed material:

➤ **Layout Changes**

- **Minor modifications may be made during construction per Builder discretion therefore varying from the Present Floor Plan.**

➤ **Finish Changes**

- **Interior and Exterior Finishes stated and shown on the promotional materials are subject to change.**

➤ **Pricing**

- **The listed and completed price of the product may vary from the price stated on the promotional materials.**

➤ **Additional Information**

- **See Builder for additional information and current details regarding the specific product of interest.**

